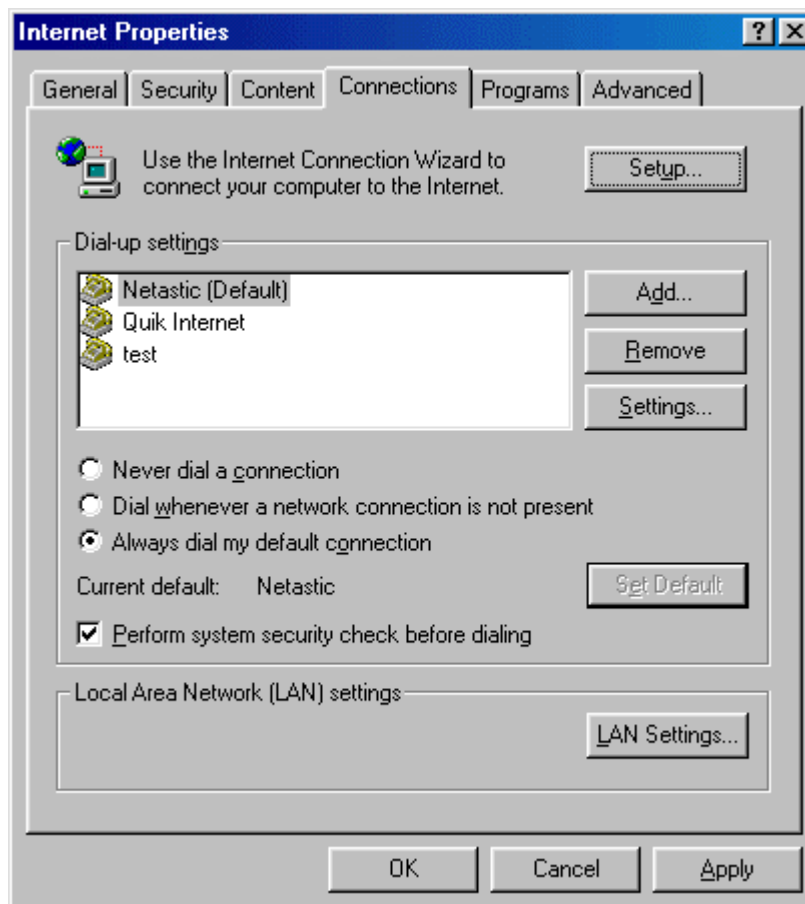


NETastic Internet Connection Directions for Win98 2nd Edition (or any Windows that has updated DUN)

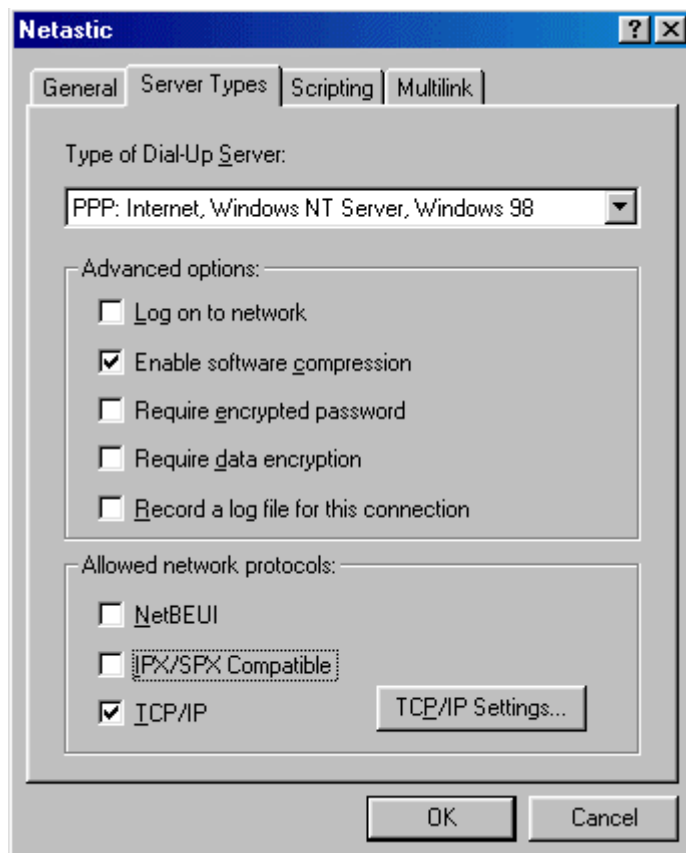
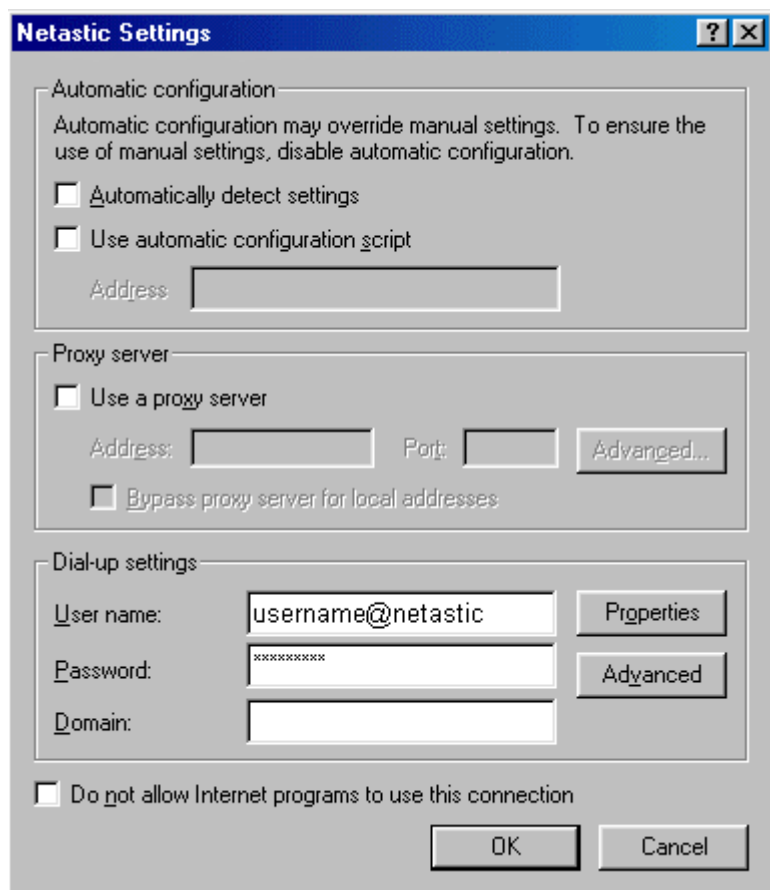
While on your “desktop” open “My Computer”. Next open up “Control Panel”. Next open up “Internet” or “Internet Options”. Next click on the “Connection” tab at the top of this window. If your “Connection” tab page looks like the one below continue with these instructions, if not go to “Internet Connection Directions A”. Next click on the “Add...” button.

In the next window type “Netastic” in the field that is labeled ‘Type a name for the computer you are dialing:’ that currently has ‘My connection’ highlighted then click on the “Next” button. In the next window enter in the local access number for your area in the “Area code” and “Telephone number” fields. Verify that the number you have chosen is local by calling the operator and asking if the number that you plan to use is local from your phone number. Then click on the “Next” button. In the next window click on the “Finish” button. Your computer will then take you back to the “Internet Properties” window. Here you will want to make sure that “Always dial my default connection” is selected and that “Netastic” is the default connection (as shown below). After the above steps are completed, click on the “Settings” button.



In this window you will need to type in your username followed by @netastic in the field labeled “User Name:” so that it looks like this: username@netastic. Then you will need to type in your password in the field labeled “Password:”. Leave the “Domain: (optional)” field blank (see example below left). After the above steps are completed, click on the “Properties” button.

In this next window click on the ‘Server Types’ or ‘Networking’ tab at the top. In this next window make sure that only the “Enable software compression” and “TCP/IP” boxes are checked (example shown below right). The last step is to click on the “OK” buttons until all of the windows are closed except the “Control Panel” window, which you can now close. You are now finished. When you open up your browser (Internet Explorer or Netscape Navigator) the dial up connection should pop up for you to connect to the Internet through **NETastic**.



Call 248-682-8600 or e-mail webmaster@netastic.net if you need help.